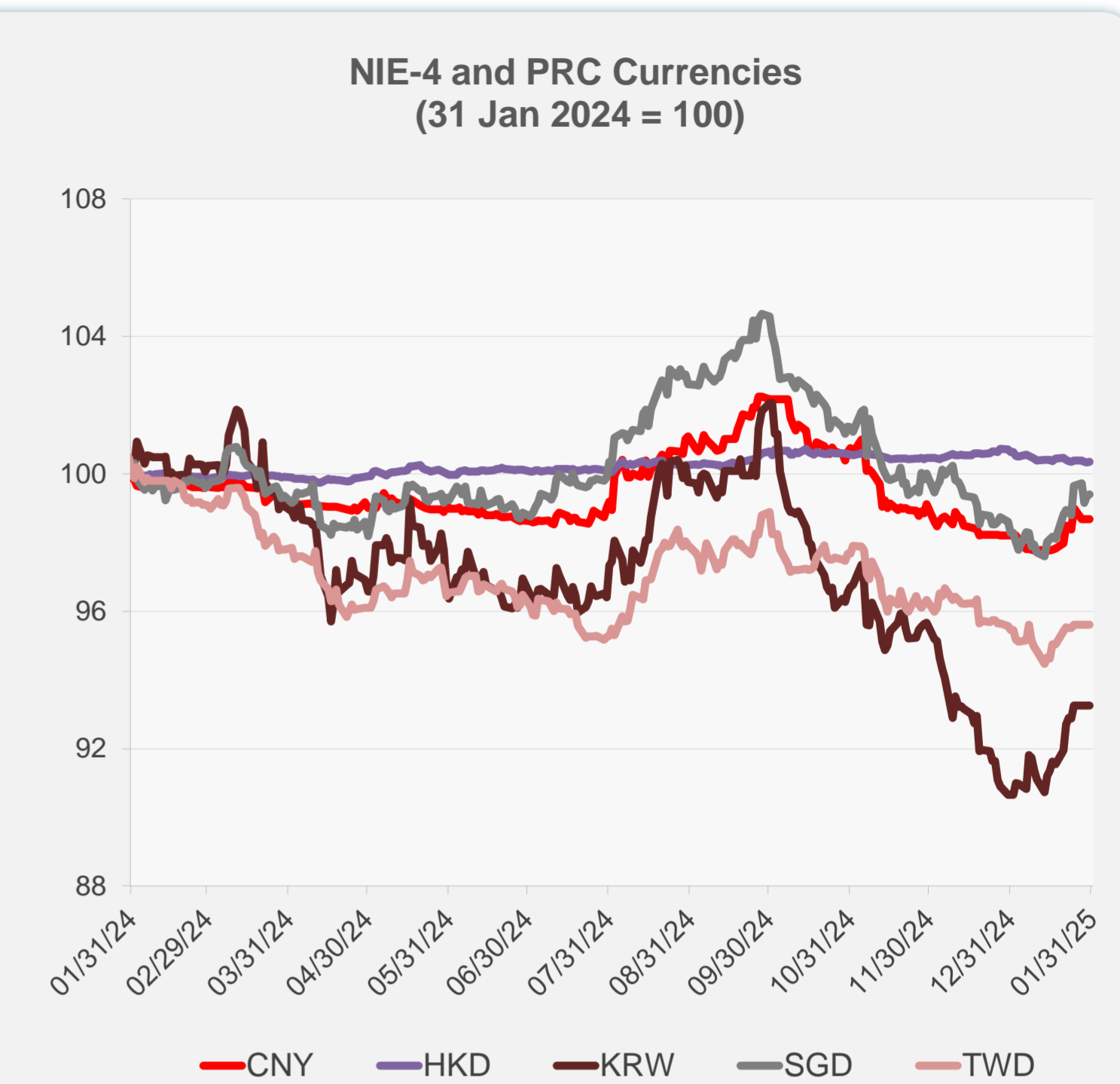
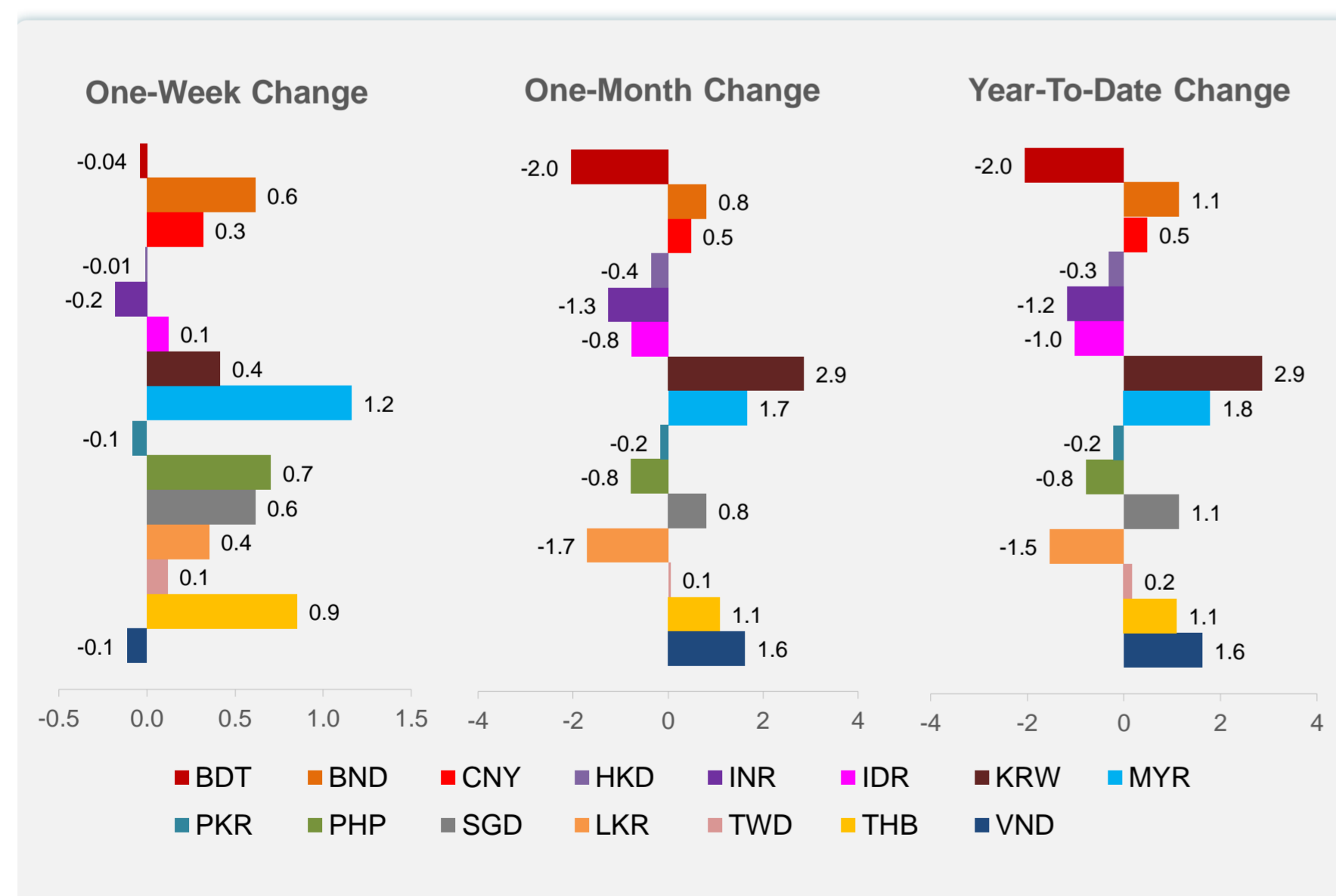
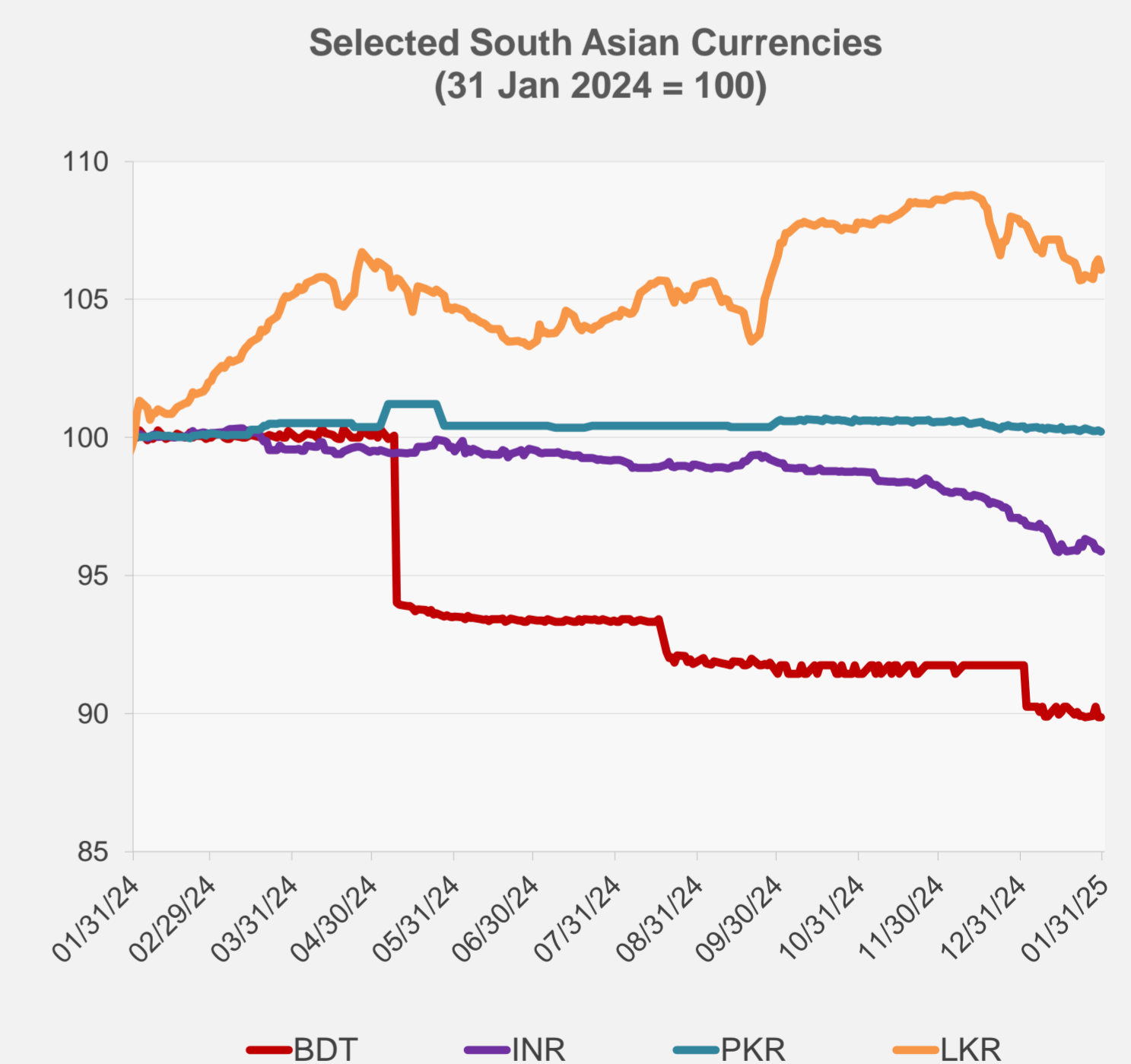
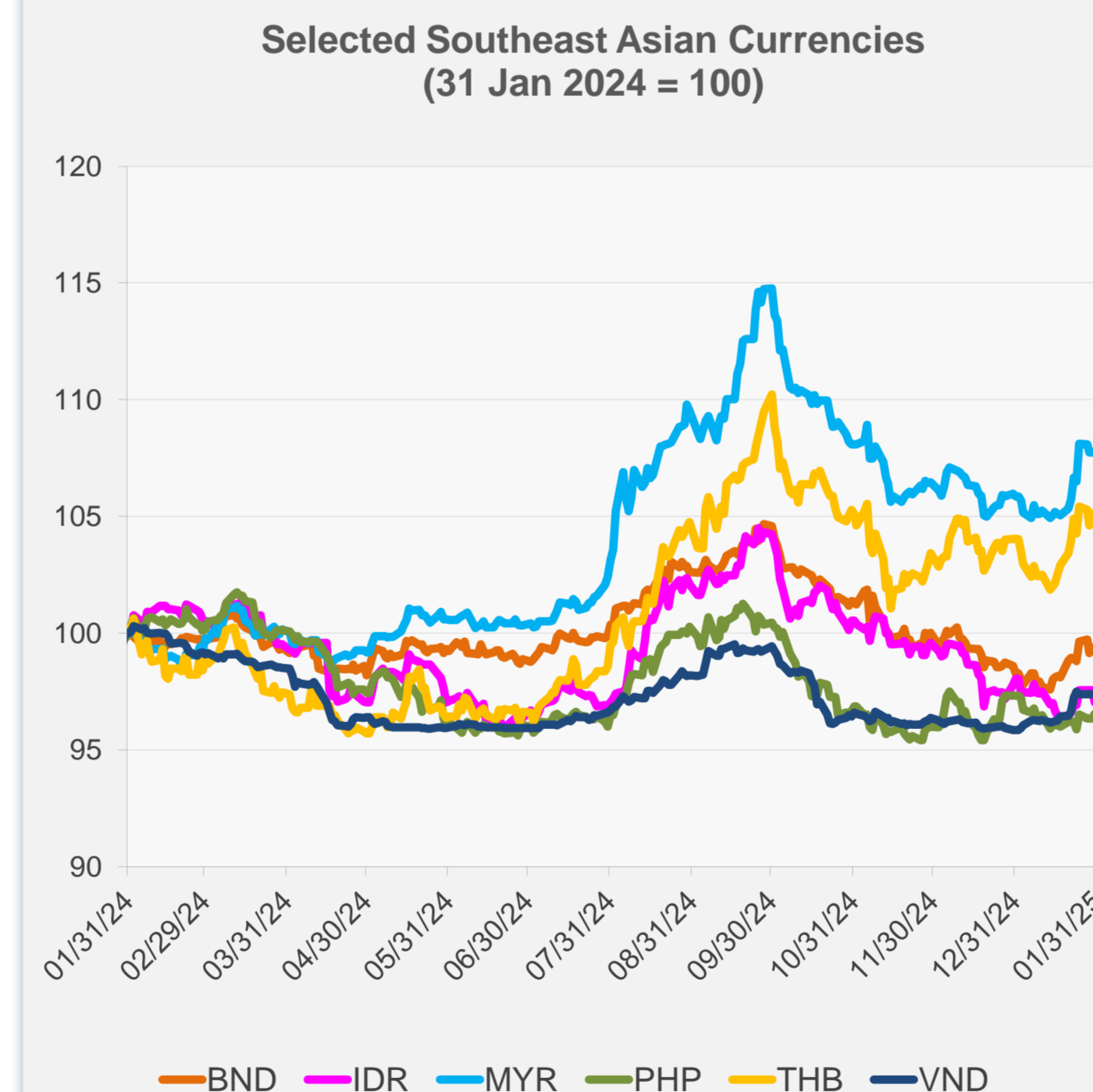


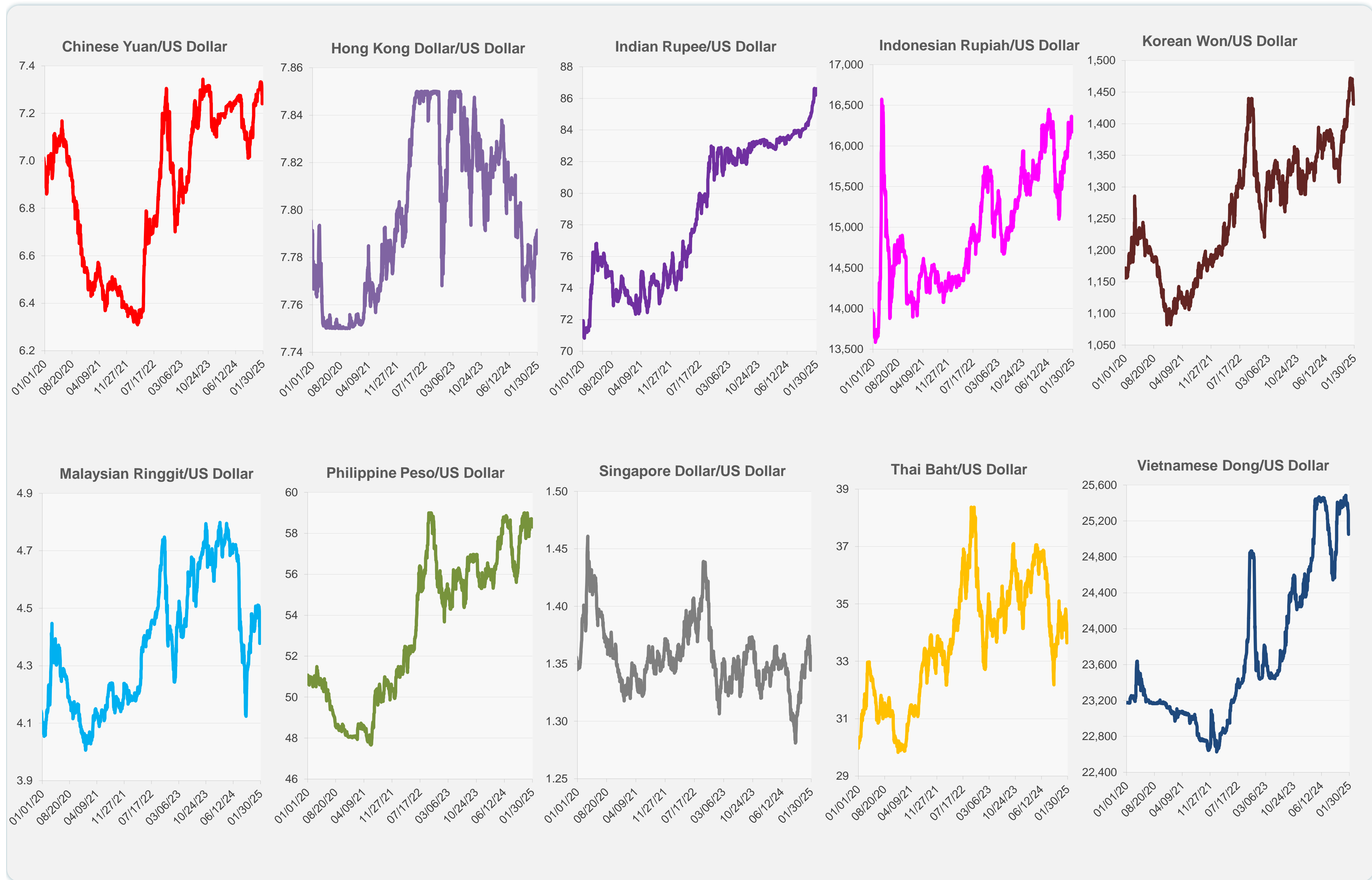
	Latest Closing	% change from Previous Day	% change from 01-Jan-25
Euro	0.96	0.11	0.74
Japanese yen (JPY)	154.14	0.57	1.96
Bangladeshi taka (BDT)	122.00	0.00	-2.05
Brunei dollar (BND)	1.35	0.05	1.14
Chinese yuan (CNY)	7.26	0.00	0.48
Hong Kong dollar (HKD)	7.79	0.01	-0.30
Indian rupee (INR)	86.62	-0.08	-1.17
Indonesian rupiah (IDR)	16,260.00	-0.54	-1.01
Korean won (KRW)	1,431.20	0.00	2.86
Malaysian ringgit (MYR)	4.39	0.00	1.79
Pakistan rupee (PKR)	278.95	-0.05	-0.21
Philippine peso (PHP)	58.30	0.23	-0.78
Singapore dollar (SGD)	1.35	0.05	1.14
Sri Lanka rupee (LKR)	297.55	-0.35	-1.53
Taipei,China NT dollar (TWD)	32.73	0.00	0.17
Thai baht (THB)	33.73	0.11	1.09
Vietnamese dong (VND)	25,078.00	0.00	1.62



NIE = Newly Industrialized Economies



Note: Negative/Decreasing values indicate depreciation of local currency, and positive/increasing values indicate appreciation.  
Source: ADB calculations using data from Haver Analytics.



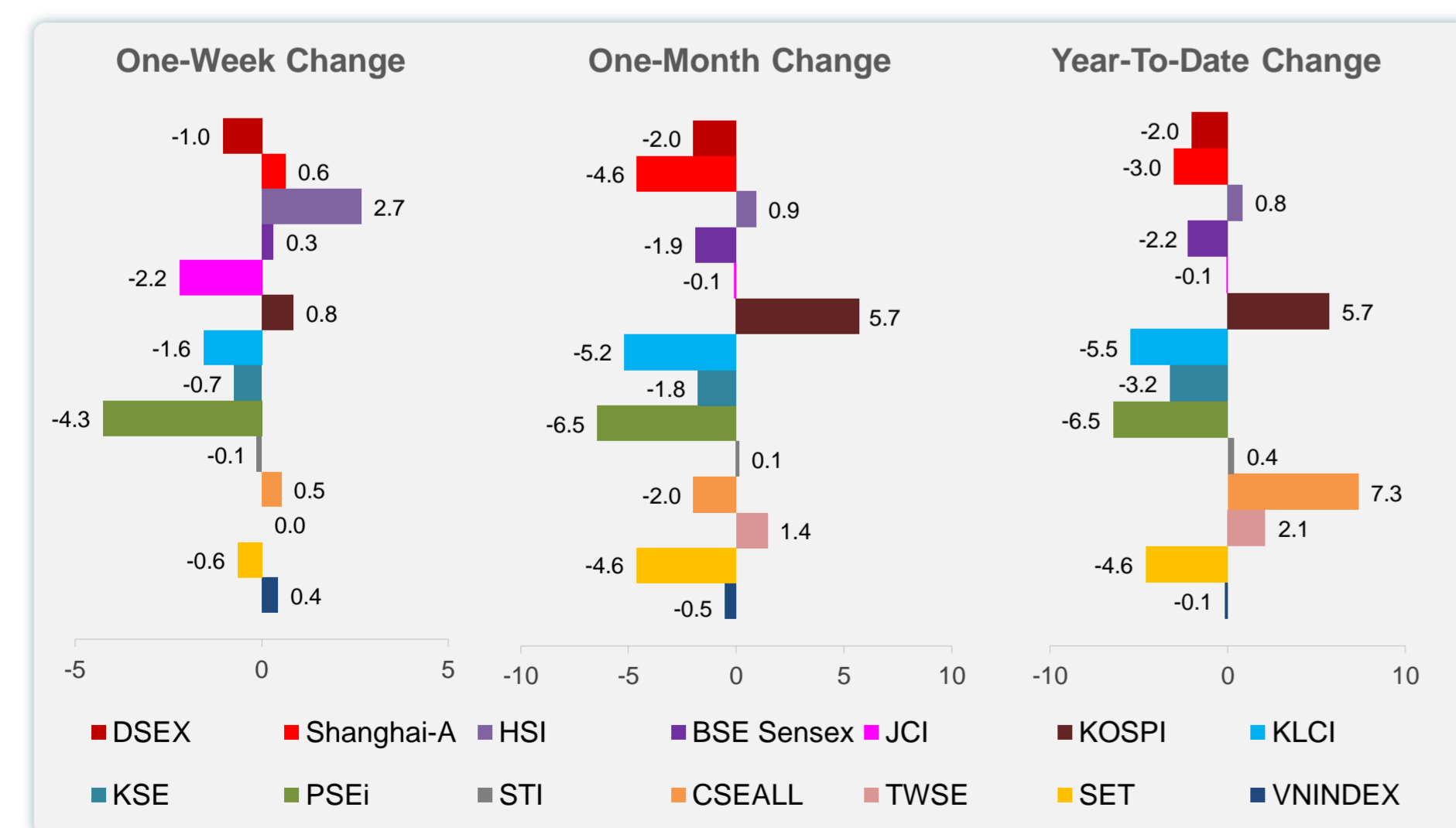
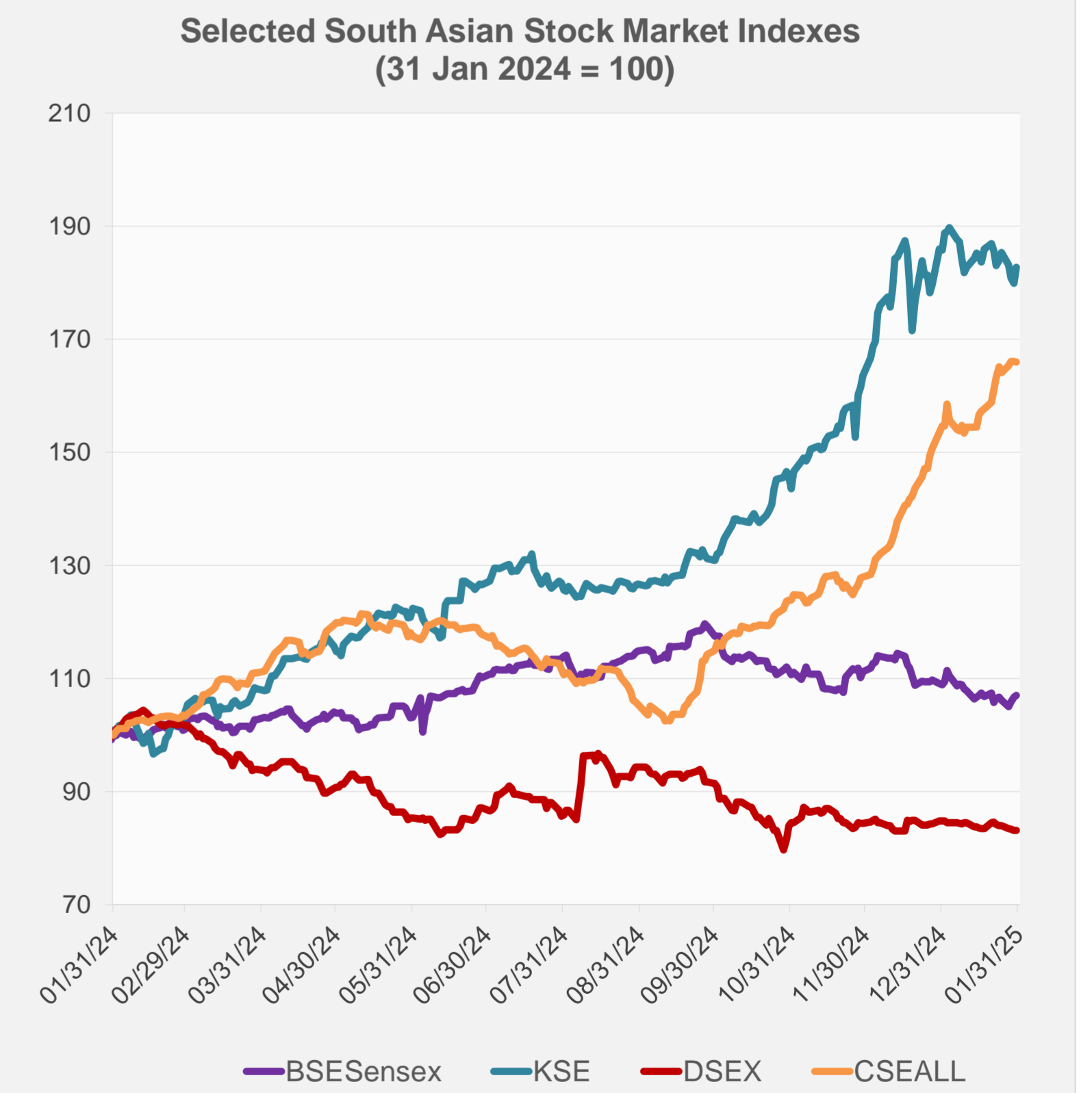
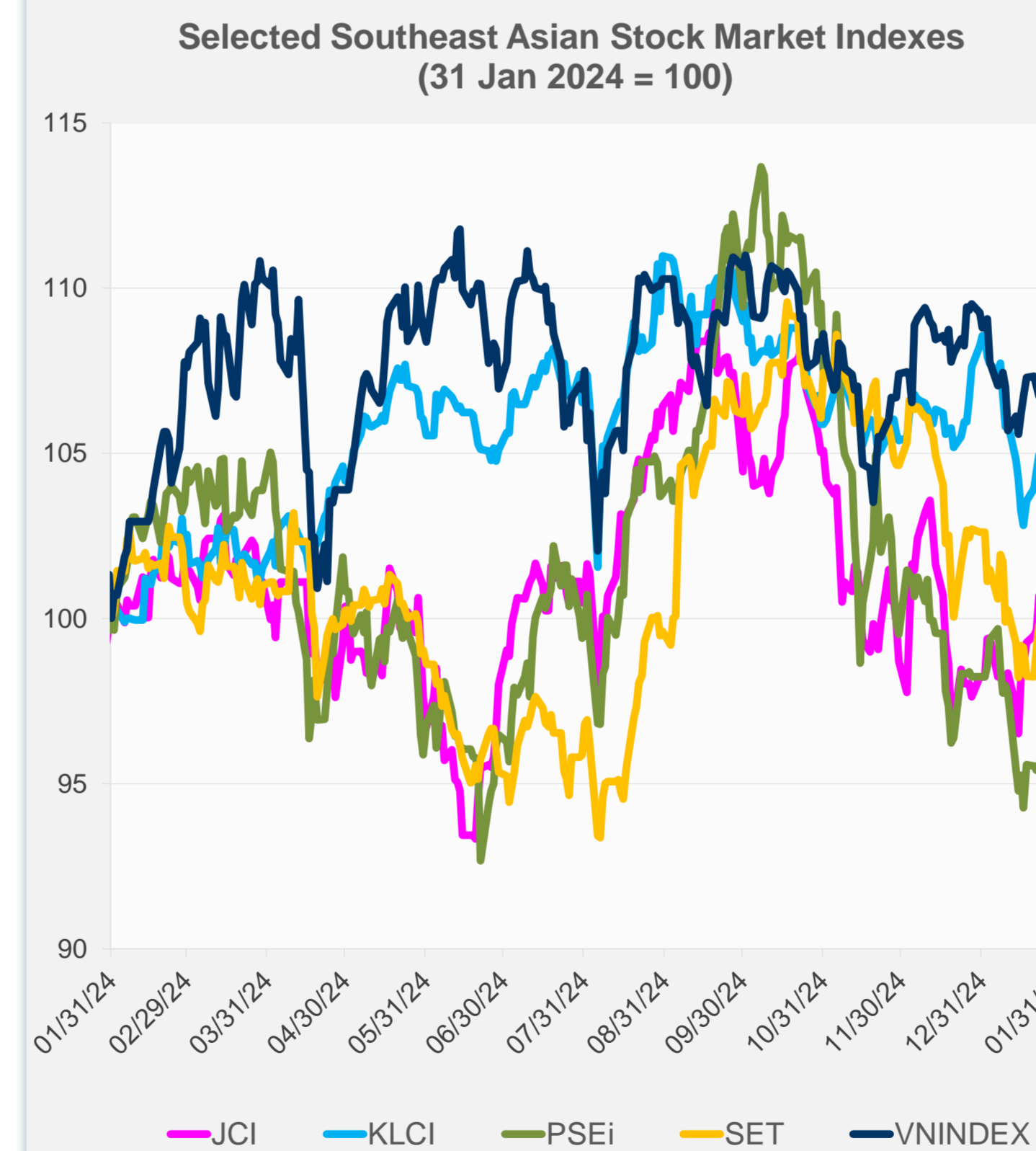
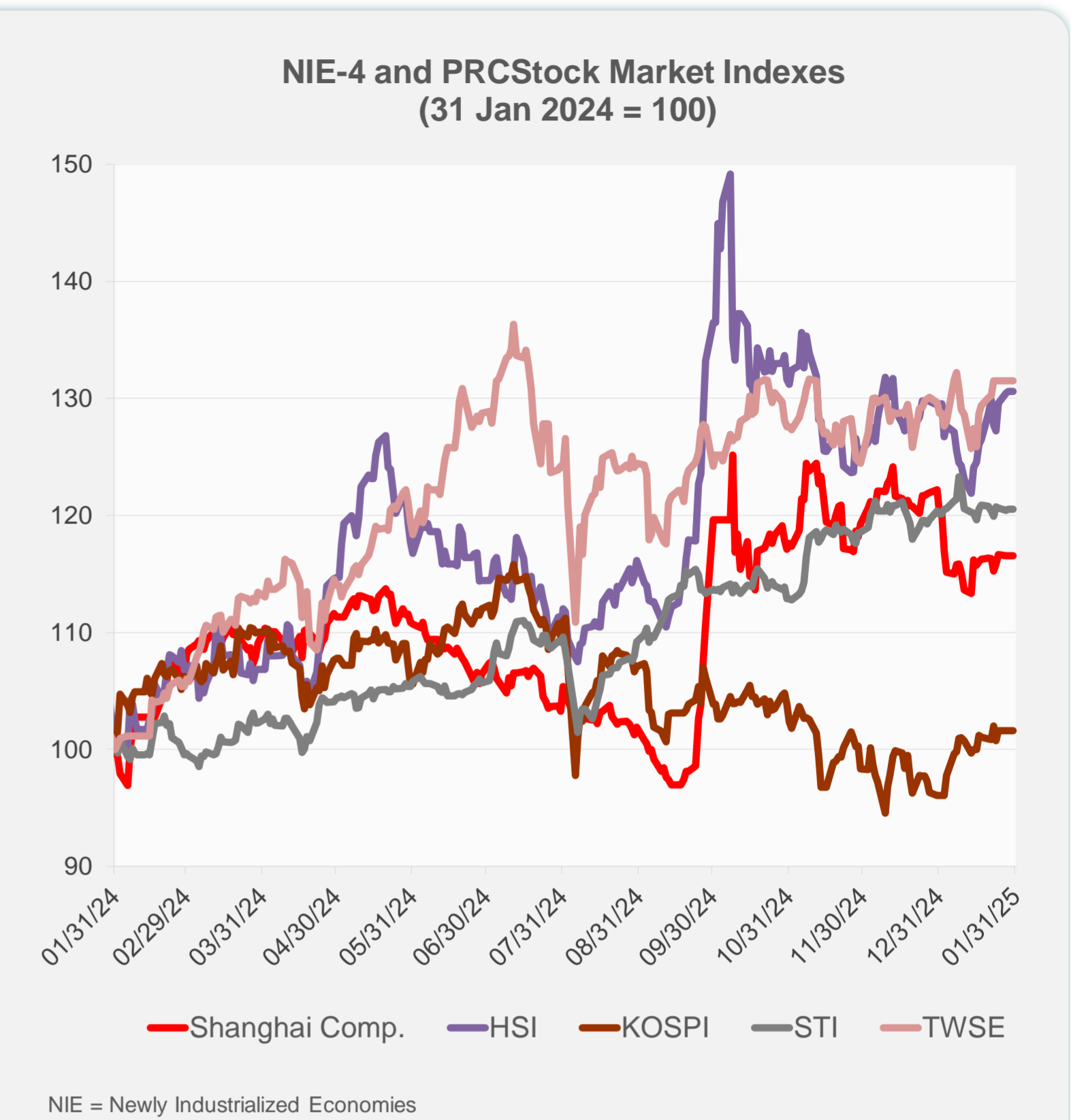
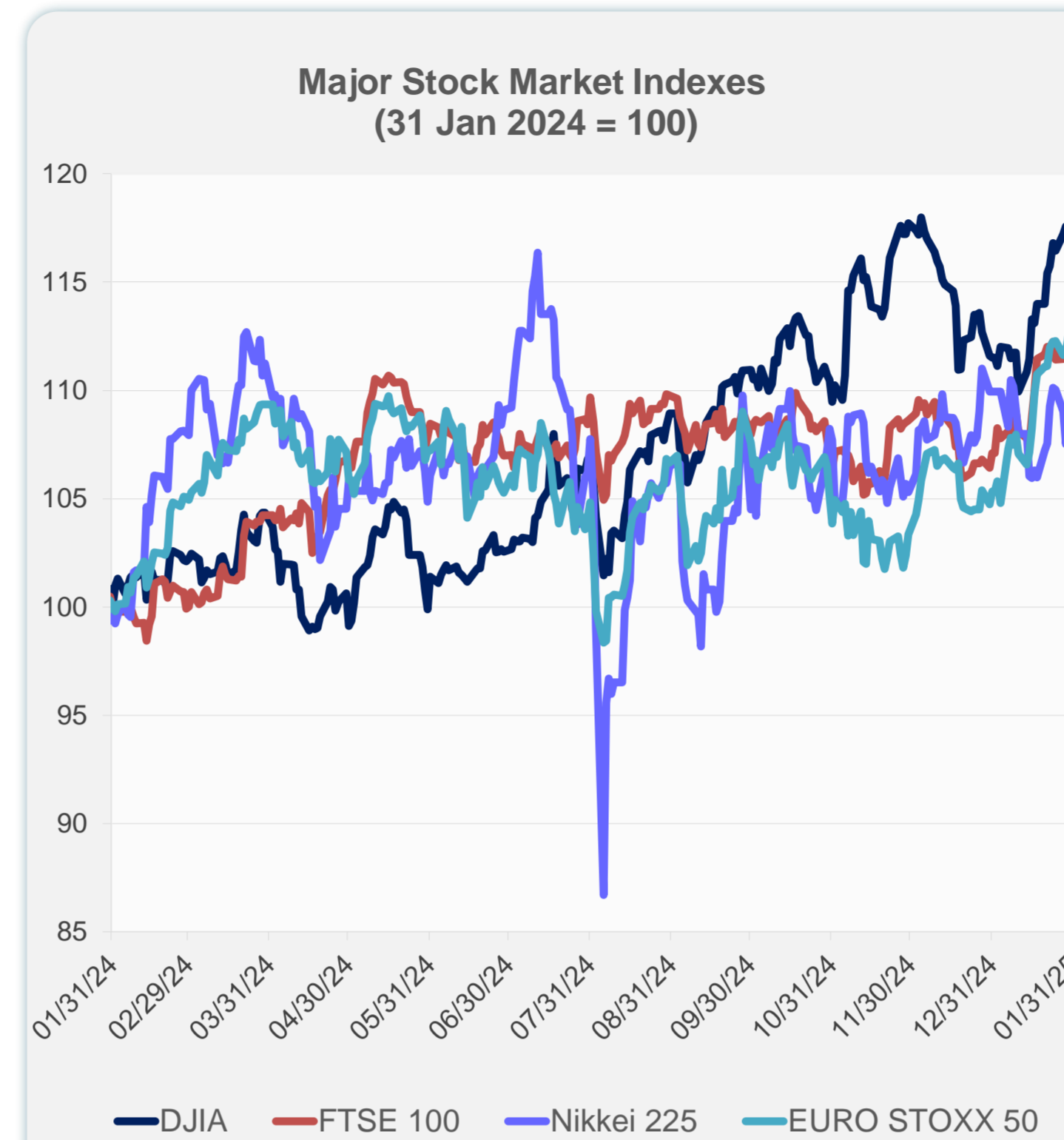
Source: Haver Analytics.



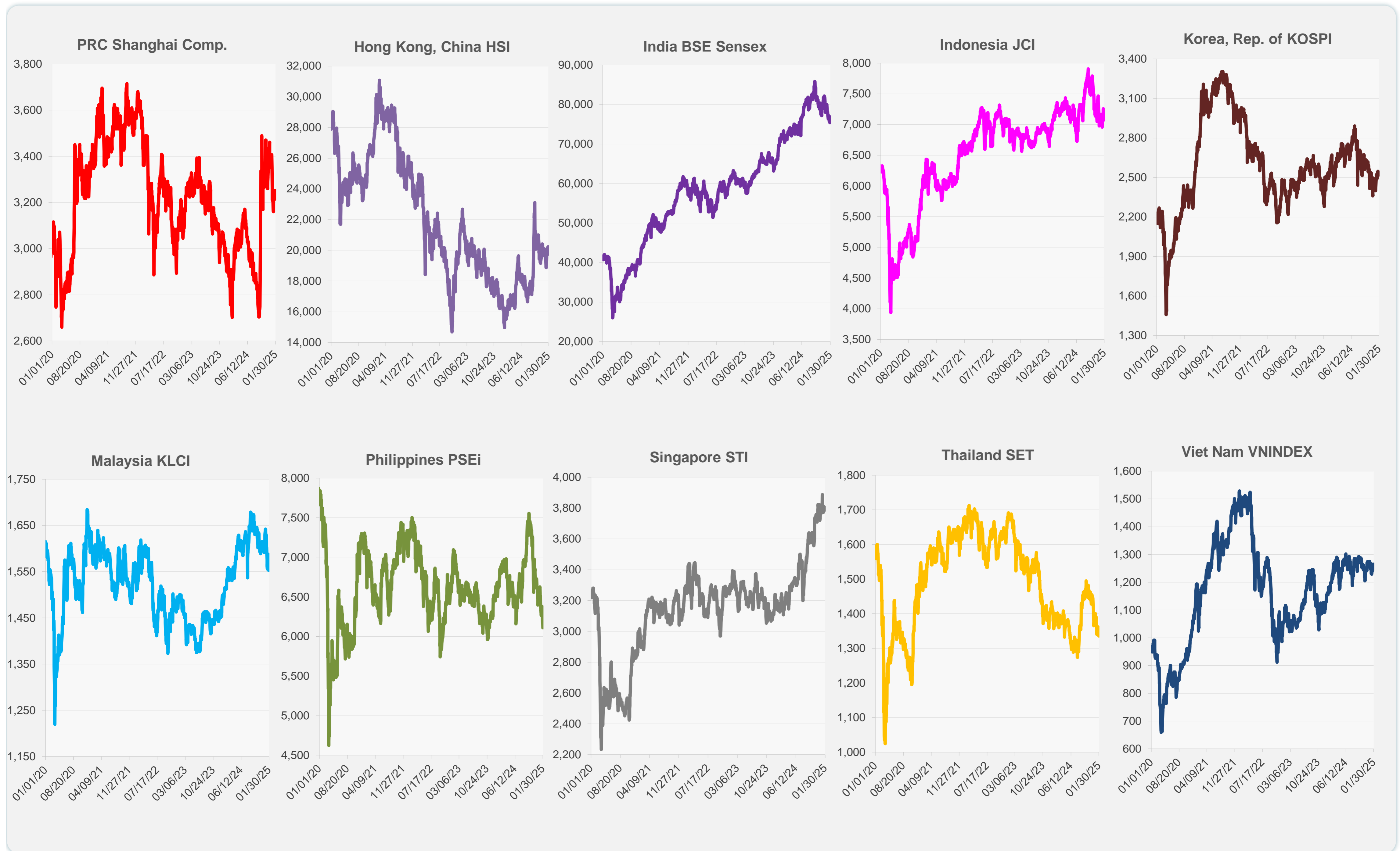
# Daily Market Watch STOCK INDEXES

31 January 2025, 9:00 AM Manila

	Latest Closing	% change from Previous Day	% change from 01-Jan-25
US Dow Jones Ind Avg	44,882.13	0.38	5.50
US NASDAQ	19,681.75	0.25	1.92
US S&P 500	6,071.17	0.53	3.22
UK FTSE 100	8,646.88	1.04	5.80
EURO STOXX 50	5,282.21	0.99	7.89
Japan NIKKEI 225	39,513.97	0.25	-0.95
Bangladesh DSEX	5,112.90	0.01	-2.02
PRC Shanghai Comp.	3,250.60	0.00	-3.02
Hong Kong, China HSI	20,225.11	0.00	0.82
India BSE Sensex	76,759.81	0.30	-2.23
Indonesia JCI	7,073.48	-1.29	-0.09
Korea, Rep. of KOSPI	2,536.80	0.00	5.72
Malaysia KLCI	1,552.69	0.00	-5.46
Pakistan KSE 100	113,206.40	1.54	-3.25
Philippines PSEi	6,107.66	-0.74	-6.45
Singapore STI	3,801.07	0.00	0.36
Sri Lanka CSEALL	17,115.21	-0.01	7.34
Taipei, China TWSE	23,525.41	0.00	2.13
Thailand SET	1,335.64	-0.56	-4.61
Viet Nam VNINDEX	1,265.05	0.00	-0.14



Sources: ADB calculations using data from CEIC Data Company and Haver Analytics.



Sources: CEIC Data Company and Haver Analytics.

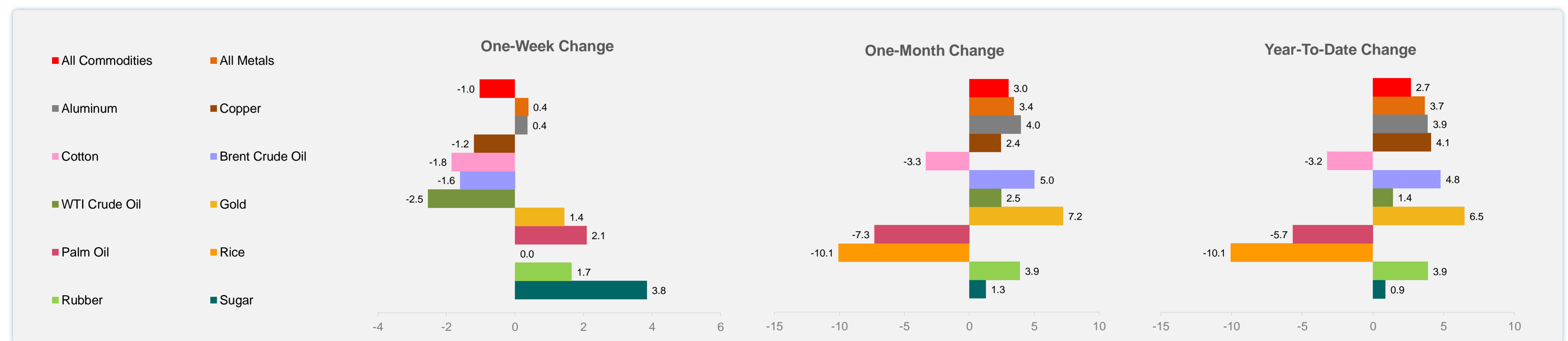
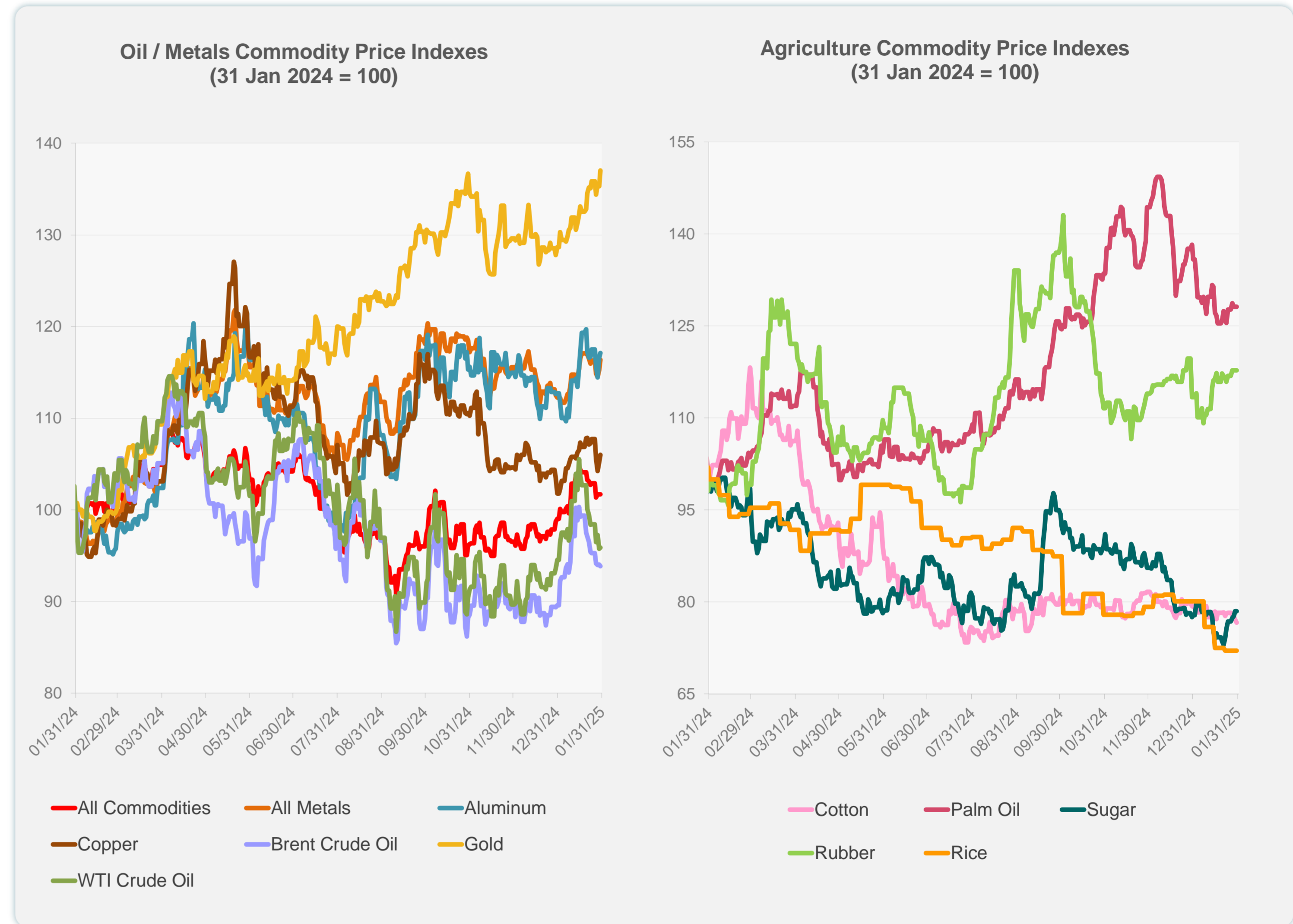


Daily Market Watch  
**COMMODITY PRICES**

31 January 2025, 9:00 AM Manila

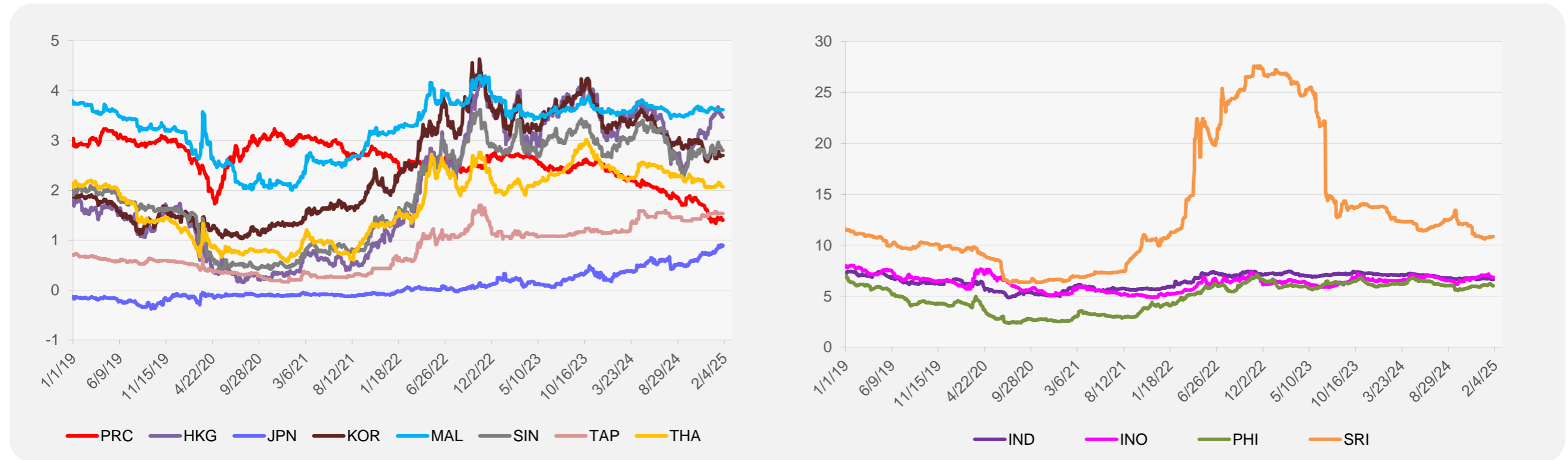
	Unit	Latest Closing	% change from Previous Day	% change from 01-Jan-25
S&P All Commodities	US\$	564.38	0.00	2.68
S&P All Metals	US\$	318.67	0.95	3.67
Aluminum	US\$/metric ton	2,624.76	0.43	3.88
Copper	US\$/metric ton	9,008.68	0.73	4.11
Cotton	US cents/lb	63.77	-0.61	-3.23
Brent Crude Oil	US\$/barrel	77.66	-0.19	4.79
WTI Crude Oil	US\$/barrel	72.73	0.15	1.41
Gold	US\$/troy oz	2,794.59	1.28	6.48
Palm Oil	US\$/metric tonne	1,037.66	0.00	-5.68
Rice <sup>1</sup>	US\$/metric ton	483.00	0.00	-10.06
Rubber <sup>2</sup>	US\$/kg	246.00	0.00	3.89
Sugar	US cents/lb	18.36	0.00	0.88

<sup>1</sup> Latest closing price from 22 January 2025.  
<sup>2</sup> Singapore Exchange, Ribbed Smoked Sheet Rubber.

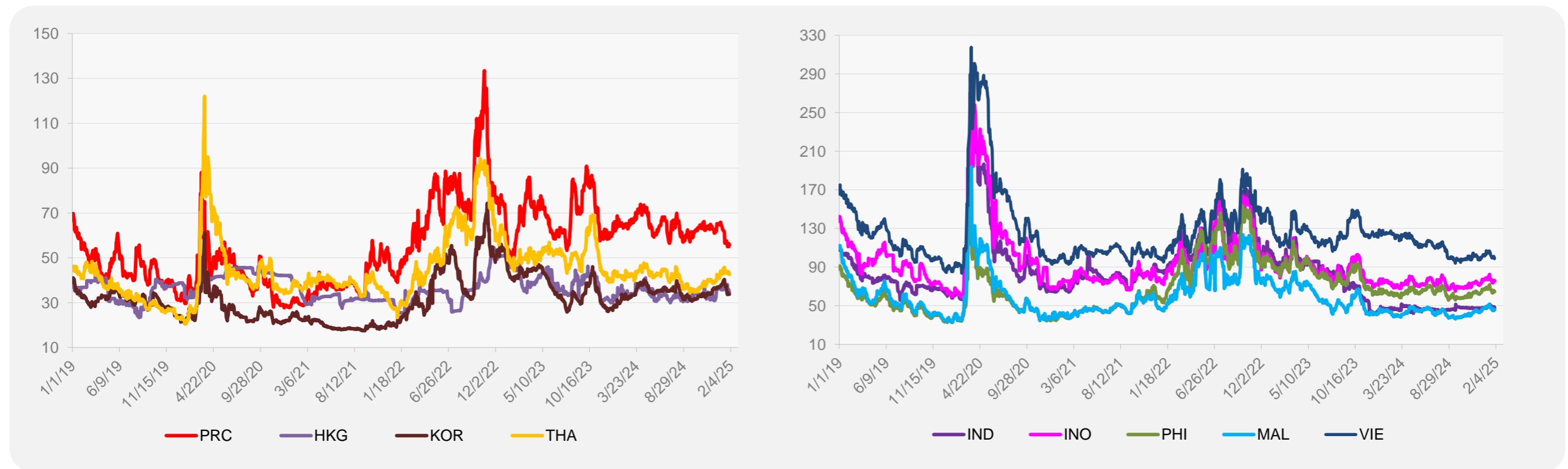


Source: ADB calculations using data from Bloomberg.

### 5-YEAR LOCAL CURRENCY GOVERNMENT BOND YIELDS (%)



### 5-YEAR CREDIT DEFAULT SWAP<sup>1</sup>



<sup>1</sup> In USD and based on sovereign bonds.  
Source: ADB calculations using data from Bloomberg.